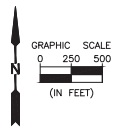


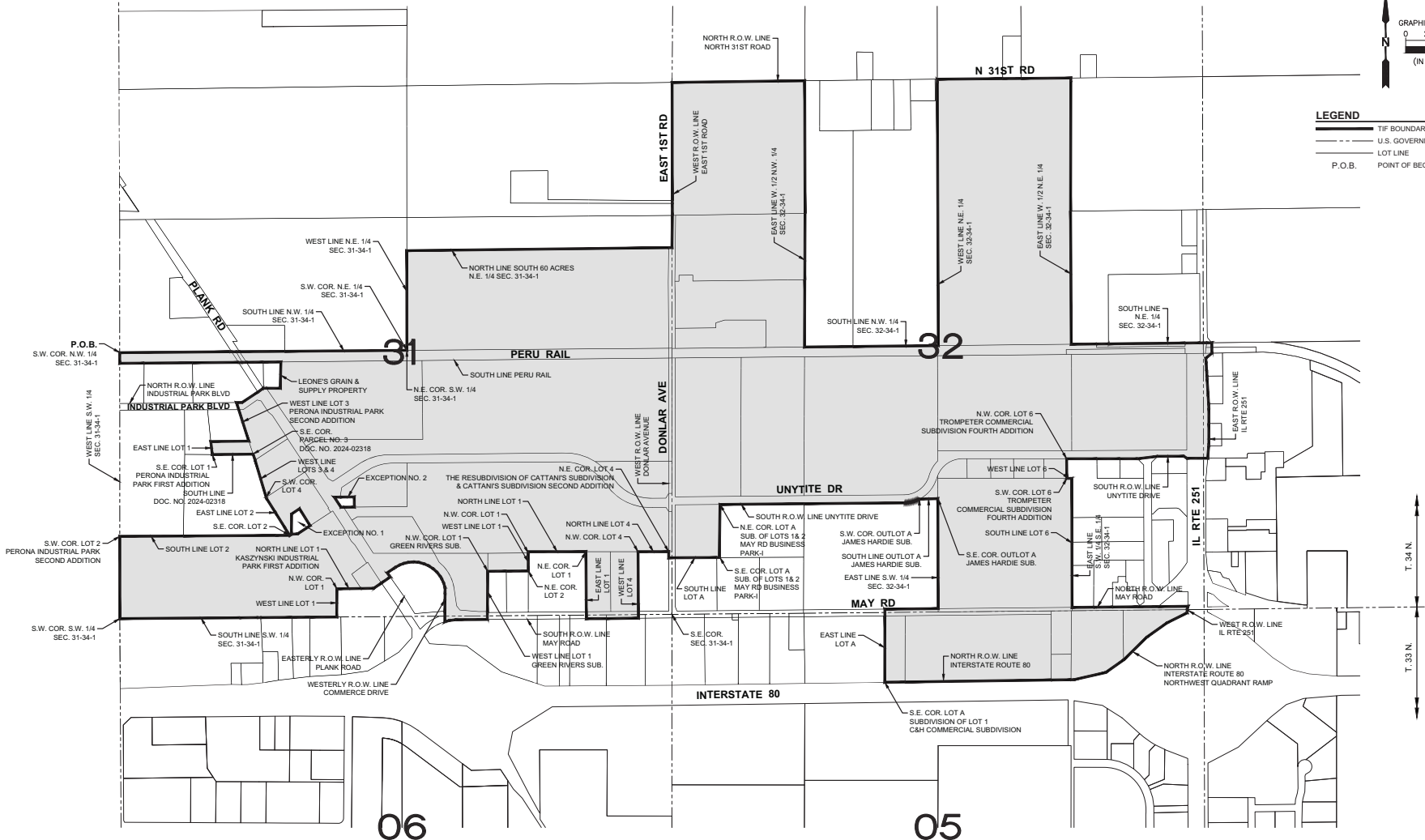
# MIDWEST INDUSTRIAL NEXUS TAX INCREMENT FINANCING DISTRICT CITY OF PERU, ILLINOIS MAY, 2025

R. 11 E. 4TH P.M.      R. 1 E. 3RD P.M.



**LEGEND**

- TIF BOUNDARY
- U.S. GOVERNMENT SUBDIVISION LINE
- LOT LINE
- P.O.B.      POINT OF BEGINNING



CHAMBERLAIN & ASSOCIATES, INC. © 2025  
 1500 N. W. 11th St., Suite 100, Ft. Lauderdale, FL 33304  
 Phone: (954) 576-1111, Fax: (954) 576-1112, Email: info@chambersandassociates.com  
 Project: Midwest Industrial Nexus Tax Increment Financing District, City of Peru, Illinois, May 2025



PERU MORRIS  
OTTAWA MORTON  
ILLINOIS

DRAWN BY: KED	REVISIONS			
CHECKED BY: MWS	LEVEL	BY	DATE	DESCRIPTION
DATE: 05/2025				

<b>EXHIBIT</b>	CURRENT AS OF: 05/08/2025	SHEET 1	OF 1
FILE NO.: 16119.00Y-	SCALE: AS NOTED		