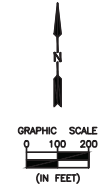
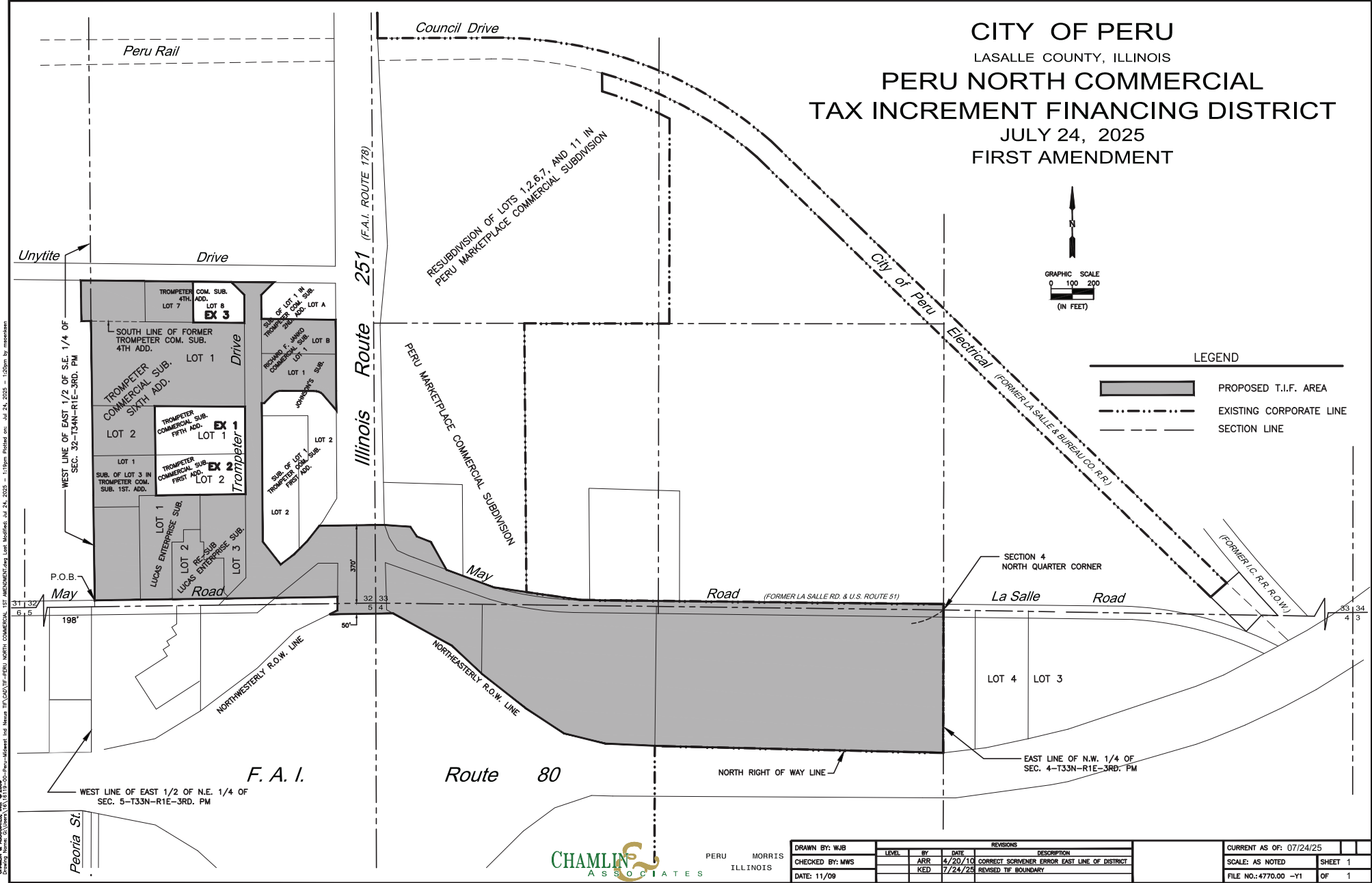


CITY OF PERU
 LASALLE COUNTY, ILLINOIS
PERU NORTH COMMERCIAL
TAX INCREMENT FINANCING DISTRICT
 JULY 24, 2025
 FIRST AMENDMENT



LEGEND

	PROPOSED T.I.F. AREA
	EXISTING CORPORATE LINE
	SECTION LINE



CHAMLIN & ASSOCIATES, INC. © 2009
 31132/6.5
 198'
 WEST LINE OF EAST 1/2 OF S.E. 1/4 OF SEC. 32-T34N-R1E-3RD. PM
 P.O.B.
 MAY
 31 32
 6 5
 198'
 WEST LINE OF EAST 1/2 OF N.E. 1/4 OF SEC. 5-T33N-R1E-3RD. PM
 Peoria St.
 CHAMLIN & ASSOCIATES, INC. 2009
 31132/6.5
 198'
 WEST LINE OF EAST 1/2 OF S.E. 1/4 OF SEC. 32-T34N-R1E-3RD. PM
 P.O.B.
 MAY
 31 32
 6 5
 198'
 WEST LINE OF EAST 1/2 OF N.E. 1/4 OF SEC. 5-T33N-R1E-3RD. PM
 Peoria St.



PERU MORRIS
 ILLINOIS

DRAWN BY: WJB	LEVEL:	BY:	DATE:	REVISIONS:	DESCRIPTION:
CHECKED BY: MWS		ARR	4/20/10		CORRECT SCRIVENER ERROR EAST LINE OF DISTRICT
DATE: 11/09		KED	7/24/23		REVISED TIF BOUNDARY

CURRENT AS OF: 07/24/25	
SCALE: AS NOTED	SHEET: 1
FILE NO.: 4770.00 -Y1	OF: 1